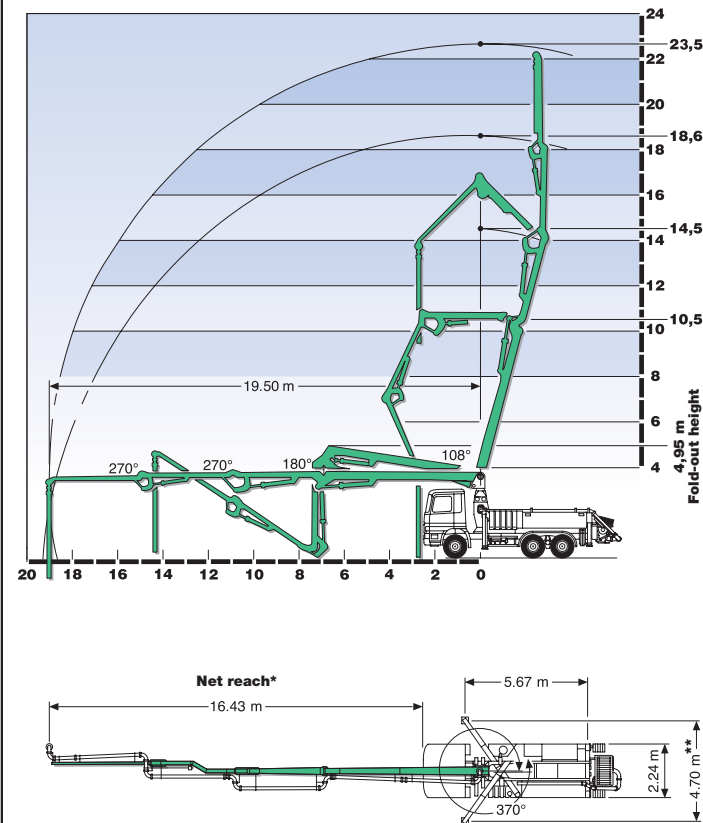


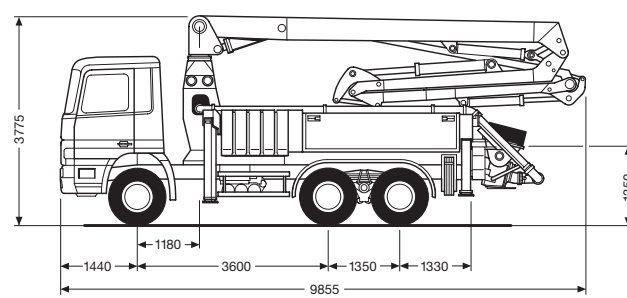
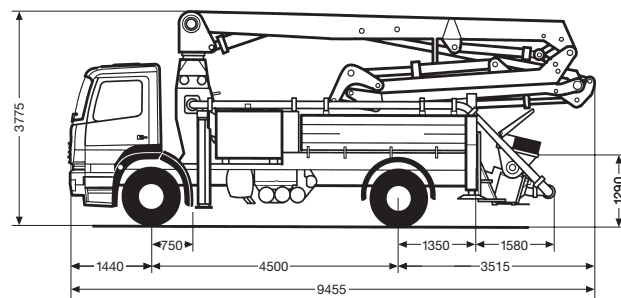
## Technical Data

Concrete pump	Model	P 2020	P 2023
Max. concrete output, theor.	m <sup>3</sup> /h	90	163
Max. concrete pressure	bars	108*	85*
Max. number of strokes	per min.	24	32
Pumping cylinder (dia. x stroke)	mm	200 x 2000	230 x 2000
* max. 85 bar when pumping through boom pipe			
<b>Placing boom</b>			
Model	<b>24 ZR</b>		
Pipeline dia.	mm	125	
Length of end hose	m	3	
Vertical reach	m	23.5	
Horizontal reach from center of slewing axis	m	19.50	
Hoisting angle	108°		
1st folding angle	180°		
2nd folding angle	270°		
3rd folding angle	270°		
Slewing range	370°		

### Working range



\* Net reach on 2-axle truck = 17.18 m  
\*\* On appropriate 3-axle truck



10191345 (2000.04.07) S

## Truck-Mounted Concrete Pump with Universal Boom

### S 24 X





# Geometry in action! Opening astonishing possibilities for jobsite operations.

Whether indoors or out on site, this machine is unbeatable in the 24 m class.

Its fold-out geometry gives it superb "under and through" snaking properties when working on 2<sup>nd</sup>, 3<sup>rd</sup> or higher floors. Add to that the ability to unfold completely in less than 5 m of headroom and its superiority quickly becomes clear.

Its combined "Z" and "Roll-fold" geometry makes it possible to manoeuvre the end hose from

maximum horizontal reach fully back to the front bumper of the carrier truck.

But the story gets even better! Such a boom, set on the easy-operate, space-saving X outriggers and lightweight main-frame, tips the scales at less than 17.5 tons on a 2-axle chassis and manoeuvrability.

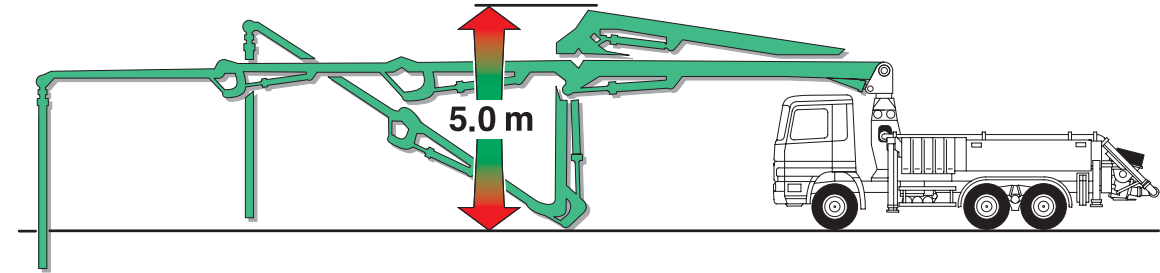
For fleet operators who want to install a high-output pump battery and also carry extra pipe,

the unit is best set on a 3-axle chassis. The increased central deadweight then allows for a reduced outrigger footprint of only 4.7 m at the front.

The renowned reliability of SCHWING concrete pump cells, combined with ergonomic handling and easy maintenance, as well as the clear arrangement of all control systems, are decisive factors towards the performance and overall economy of the S 24 X.

An absolute must, especially when working indoors or in restricted areas, is an intelligent boom geometry with a sensitive, easy-to-operate control system. Here the SCHWING Pulsar proportional boom control and the standard SCHWING radio remote control attain absolute positioning accuracy with low operator stress. Another further boost to overall economy and efficiency.

Only 5 m headroom? Fold-out is no problem!



Standard: Splash guard and hopper cover, robust steps and handgrips, storage and holders for tools and accessories.



All hydraulic controls for boom, outriggers and auxiliary circuits positioned centrally behind lockable doors.



Plenty of stowage for extra pipes, hoses and clips behind the swing-down sideboard.



Level catwalks on the undercarriage make for safe and easy cleaning and maintenance.

