

# K42L

## TRUCK-MOUNTED CONCRETE BOOM PUMP

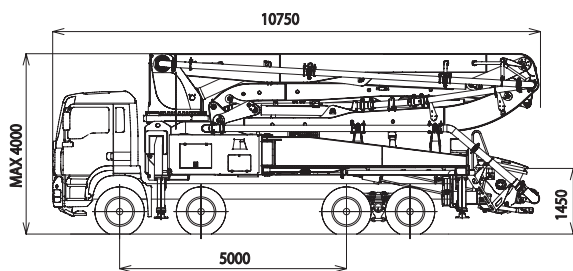
Placing boom  
Pumping unit

B5RZ 42/38  
HP1808ECX  
HP1608EC  
HP1606H  
PTO  
4 axles

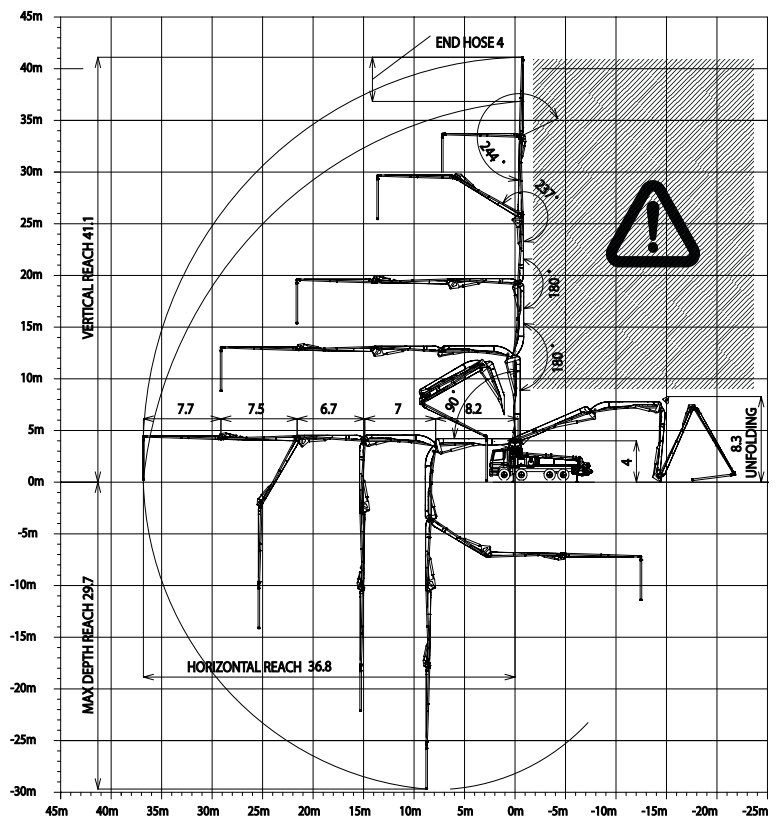
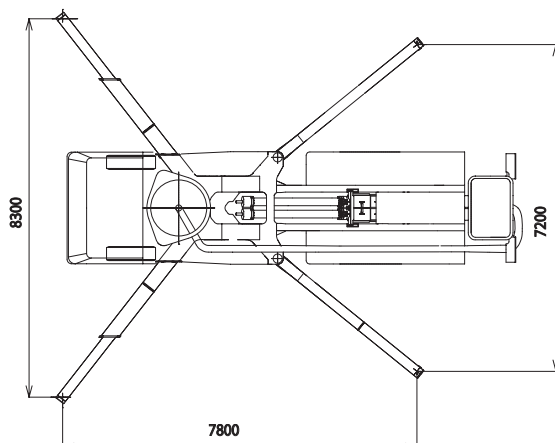
Driven by  
Chassis



### Dimensions



Dimensions varying according to truck assembly



# K42L

## Main features

- Advantageous assembling on standard 4 axes chassis
  - Self-supporting frame, torsion free, FEM designed
  - Placing boom B5RZ 42/37, 5 sections, pipeline diameter 125 mm, "RZ" folding system
  - Fully hydraulic outrigger controls on both sides of the truck
  - Front "X" style diagonal outriggers with double telescopic opening and swing-out rear outriggers for a quick and easy set-up also in narrow areas
  - "Load Sensing" proportional boom control
  - "BFC" Best-Flex Cifa supporting system allowing just one man to change delivery pipeline easily, quickly and safe
  - Concrete flow rate regulator
  - Safety device on opening inspection hatch
  - HP pumping unit with closed circuit and reversal flow: superb performances, high pressures and output, high reliability and easy and reduced maintenance; 9 inches S valve (HP1608EC) or 10 inches S valve (HP1808ECX)
- alternatively:*
- HP pumping system with open circuit: (HP1606H) smooth, continuous and easy pumping, combined with high reliability

## Standard equipment

- 2 Proportional radio control with two boom movement speed, synthesizer for automatic frequency search, 8 position joy stick and concrete flow rate regulator. 20 mt cable
- Emergency control pad for pumping unit HP-C
- Remote controlled electric vibrator placed on the concrete hopper grid
- Centralized lubrication system for pumping unit
- Automatic oil lubrication system for pumping pistons on HP-C
- Additional manual lubrication system for pumping unit
- Hard plastic outrigger support plates with relative housing
- Rear light on hopper
- Level readers for stabilization control
- Accessories for cleaning and pipes washing
- Double thickness concrete pipes, in high resistant steel and insert carbide chrome - CIFA Long Life Pipes
- Fiber glass hopper covering

## Main optionals

- **L-tronic™**
- **Smartronic™**
- High pressure water pump
- Air compressor for pipeline cleaning
- Centralized lubrication system for placing boom
- Air pipeline for placing boom
- Separated emergency engine kit for independent control of the hopper mixer, concrete pumping unit, boom and water pump

## TRUCK-MOUNTED CONCRETE BOOM PUMP

<b>Placing boom</b>	B5RZ 42/38
<b>Pumping unit</b>	HP1808ECX HP1608EC HP1606H
<b>Driven by</b>	PTO
<b>Chassis</b>	4 axes

## Pumping unit technical data

Model		HP1808ECX	HP1608EC	HP1606H
Max. theoretical output	$m^3/h$	180	160	160
Max. pressure on concrete	$bar$	83	80	53
Max. numbers of cycles per min.	$nr.$	27	31	30
Conc. cylinders (diam. x stroke)	$mm$	260x2100	230x2100	230x2100
Concrete hopper capacity	$l$	600	550	550
Hydraulic circuit		closed	closed	open

## Placing boom technical data

Model		B5RZ 42/37
Pipeline diameter	$mm$	125
Max. vertical reach	$m$	41,1
Max. horizontal distance (from center of slewing axis)	$m$	36,8
Min. unfolding height	$m$	8,8
Section numbers		5
1st section opening angle		90°
2nd section opening angle		180°
3rd section opening angle		180°
4th section opening angle		237°
5th section opening angle		244°
Rotating angle		370°
End hose lenght	$m$	4

Technical data and characteristics subject to modifications without notice